

GEOHERMAL DISTRICT HEATING SERVICE HUBS - GDHSH



User4GeoEnergy project WP6

Project intervention logic: to improve the efficiency of *any* geothermal DH system by

- capacity building of their operators and
- developing a novel methodology enabling a throughout assessment and adjustment of system characteristics.

WP3: knowledge transfer activities < WP4-WP5: innovative model and methodology development < WP6: transferring, replicating and sustaining results beyond the end of the project.

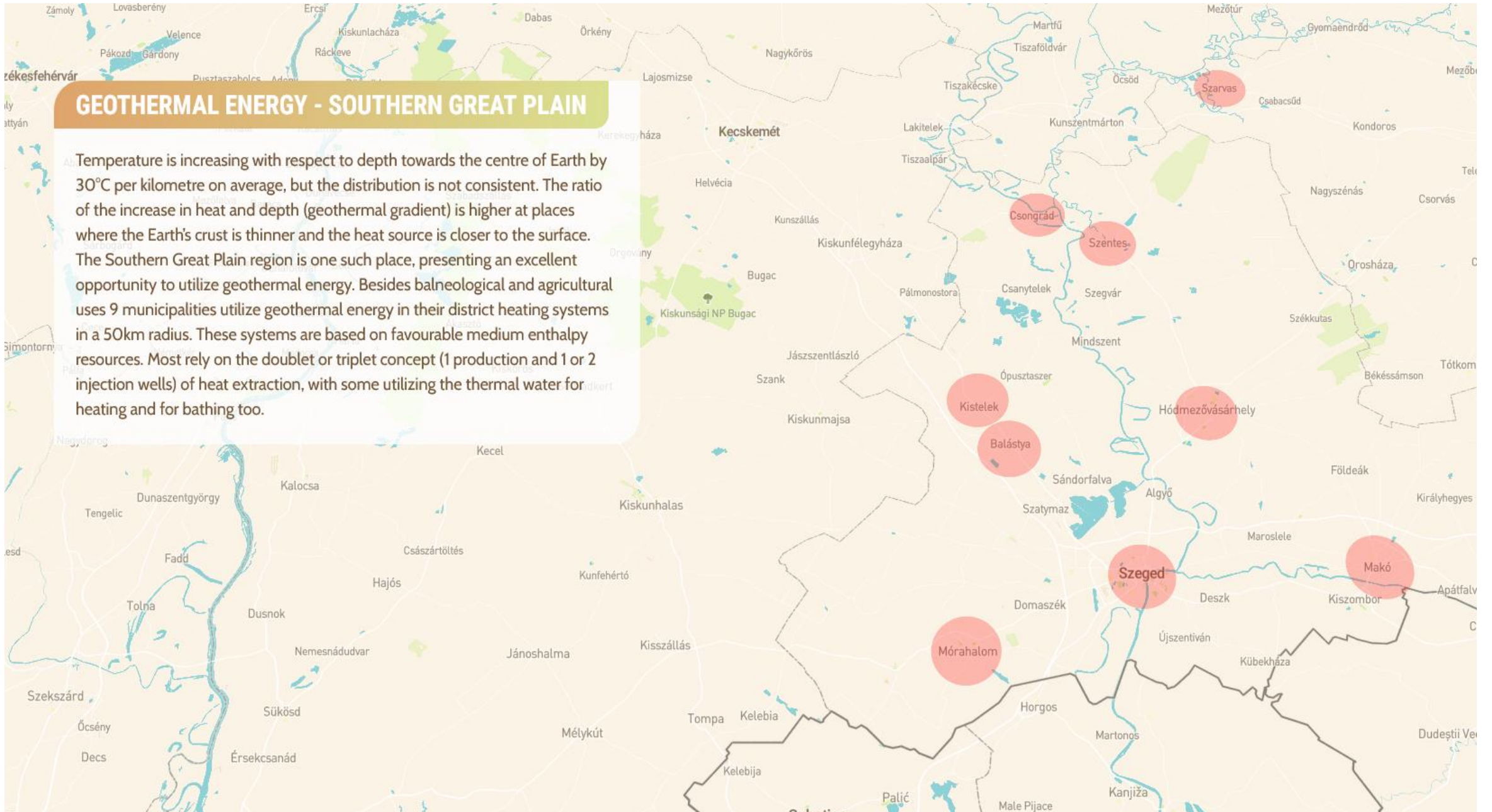
Purpose: ensuring that project outputs lead to the envisaged programme outcomes in a visible and durable manner.

Target group: system operators throughout Europe.

Activities: personal, one-to-one services, analysis and face-to-face advice enhancing efficiency and maintaining sustainability. The *Service Hubs* will be set up in Krakow (PL), Bratislava (SK) and Szeged (H) and they will have a distinct visual appearance referring to the *EEA and Norway Grants Fund for Regional Cooperation* funding of the project.

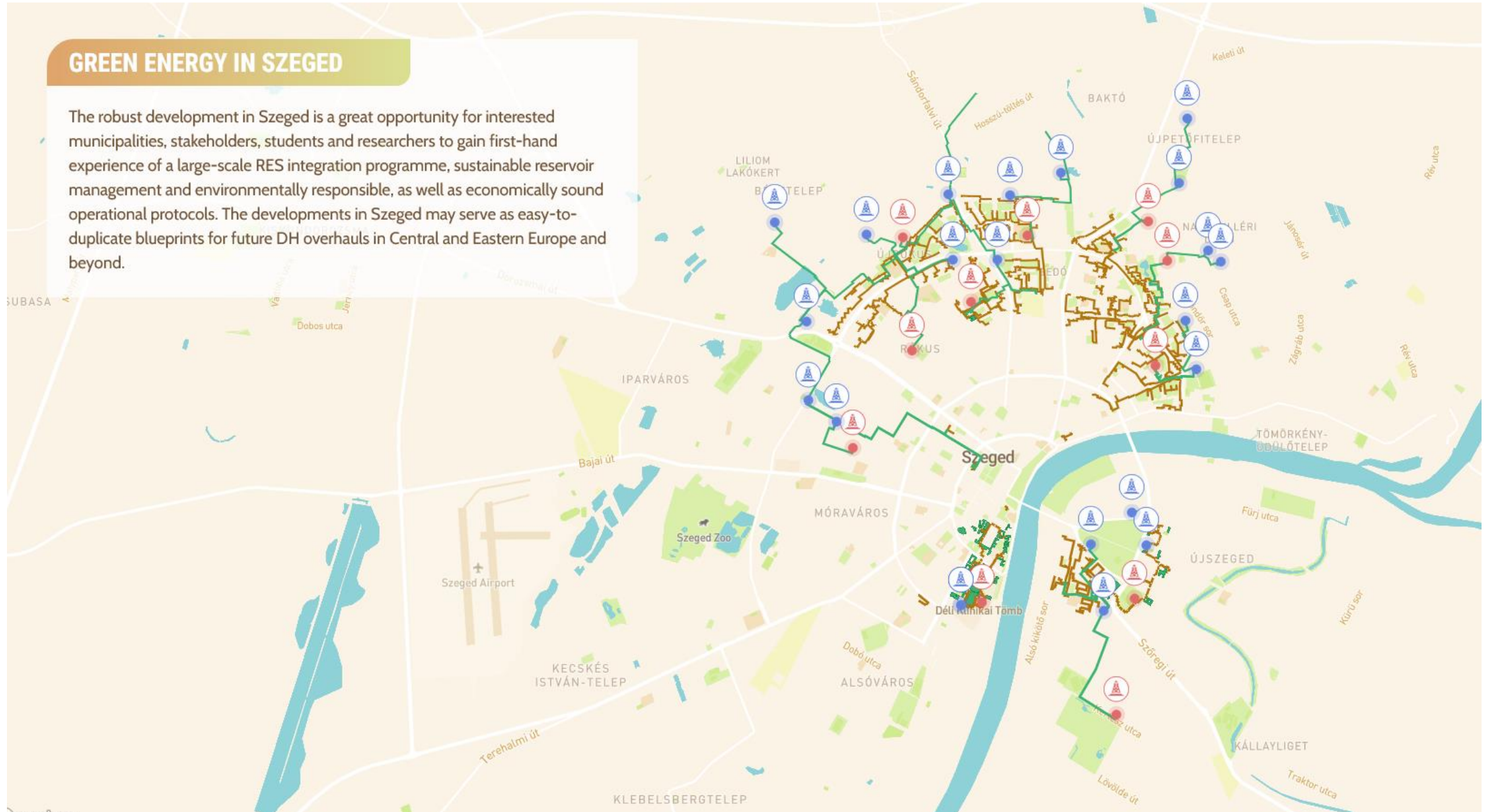
GEOTHERMAL ENERGY - SOUTHERN GREAT PLAIN

Temperature is increasing with respect to depth towards the centre of Earth by 30°C per kilometre on average, but the distribution is not consistent. The ratio of the increase in heat and depth (geothermal gradient) is higher at places where the Earth's crust is thinner and the heat source is closer to the surface. The Southern Great Plain region is one such place, presenting an excellent opportunity to utilize geothermal energy. Besides balneological and agricultural uses 9 municipalities utilize geothermal energy in their district heating systems in a 50km radius. These systems are based on favourable medium enthalpy resources. Most rely on the doublet or triplet concept (1 production and 1 or 2 injection wells) of heat extraction, with some utilizing the thermal water for heating and for bathing too.



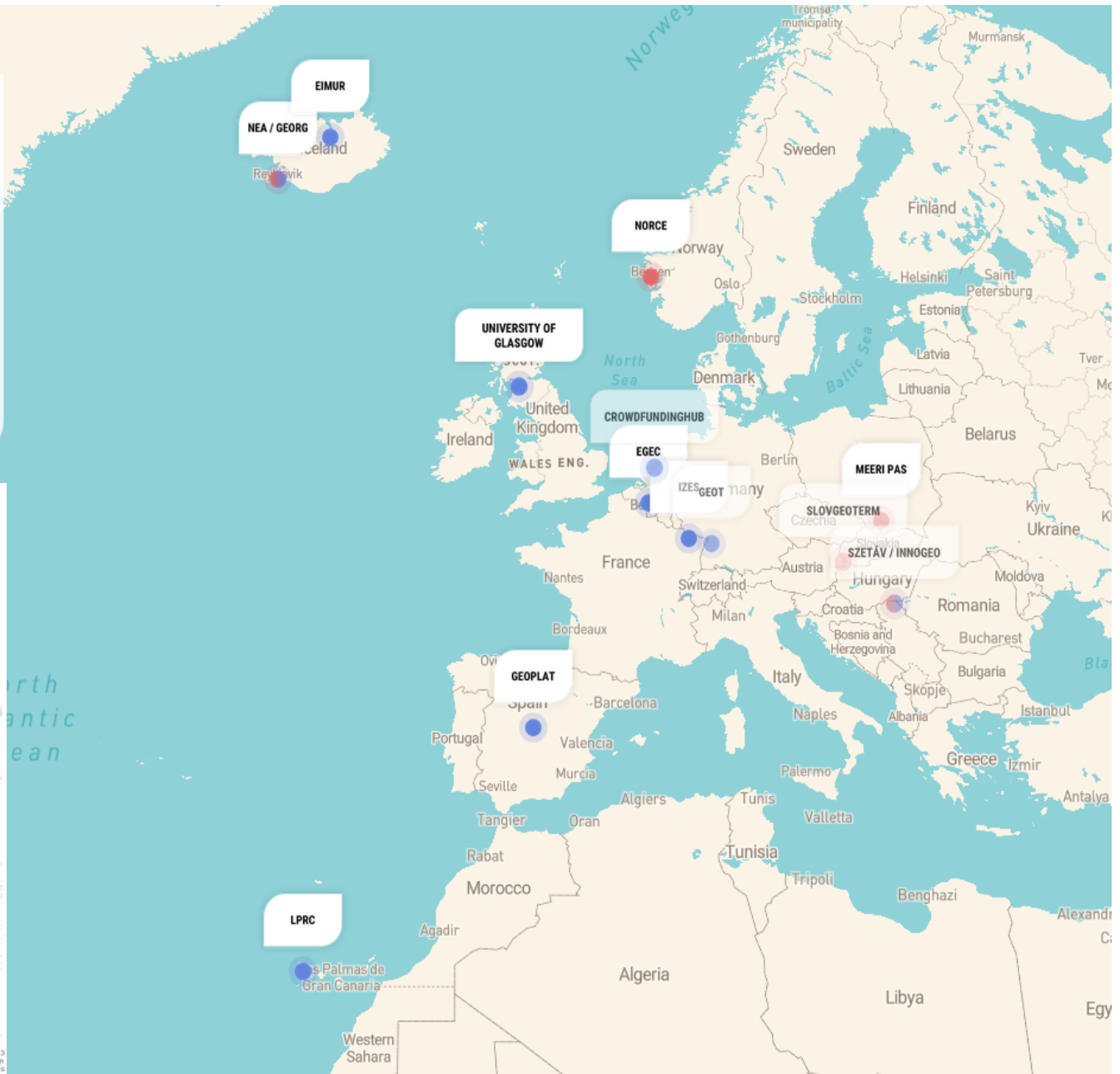
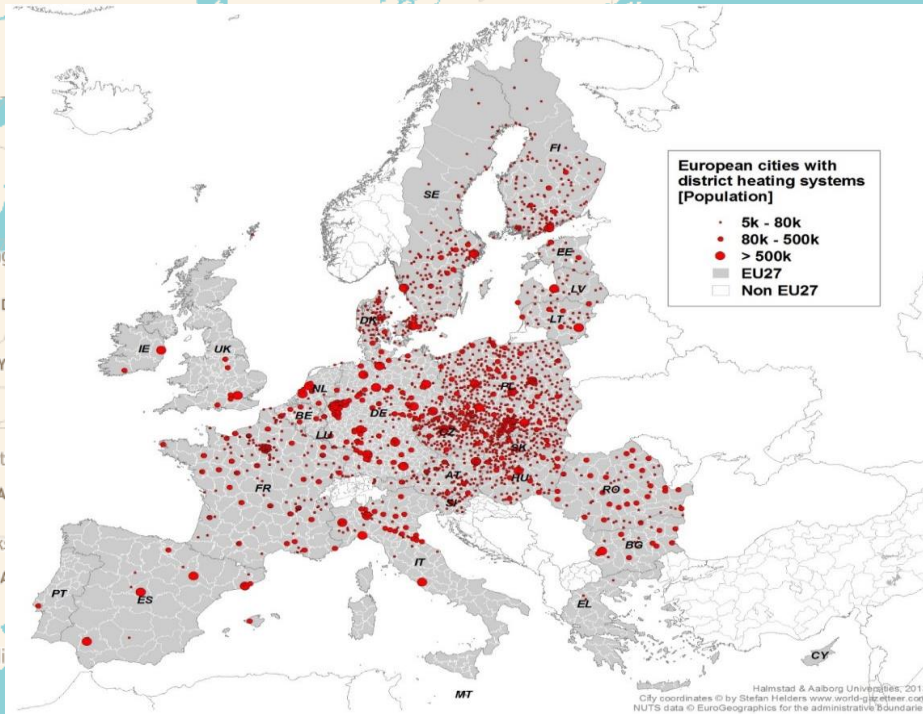
GREEN ENERGY IN SZEGED

The robust development in Szeged is a great opportunity for interested municipalities, stakeholders, students and researchers to gain first-hand experience of a large-scale RES integration programme, sustainable reservoir management and environmentally responsible, as well as economically sound operational protocols. The developments in Szeged may serve as easy-to-duplicate blueprints for future DH overhauls in Central and Eastern Europe and beyond.



COOPERATION WITH SZEGED

With a dedicated pool of professionals, SZETAV and its partners engage in H2020, EEA Interreg and other cooperation, including the ongoing CROWD THERMAL (SZETAV) and User4GeoEnergy (InnoGeo) projects. Always open for participation in ambitious R&D projects, SZETAV and its partners have made Szeged a popular case study for international consortiums in the field of renewable energies and rightly so: switching the district heating of medium size cities to geothermal is a major step towards a carbon neutral, sustainable Europe.



A need for a dedicated know-how transfer facility



Design and visual appearance



Our common service provider!

Ad moloria estium eum, simpedis exeritiis essita voluptaqui bla voluptat molupta vellorest ea valoritincid quo moluptaese essum facea non repreritis conesci entiiis num re mo moloris et omnitassimet fugitat essecus aut quatem di dio. Nat odis et mil ipiet ipition pereper feruptat la quassitatur? Omnibus, officitatis aspitat.

Ad ullab idis es assenie

Millabo repuditam verum es eum qui coneturis alia pos ipsae velest, voluptium adis ate laborerumqui idem. Giti-buscipis pelecuptae pre, ommodia ssmusanto ommolor ernatqui omni accae et volorem adit doluptae sus nam voluptatis reperio nsendio et adi sedio. Ut vendae volupta que volorem rem sunt voluptat latent quis aut eium ium-que nos est atur simaximus et eatem sitibus sit ulparci anditiore, sa volestibus eatet que dolecte nihit doluptas estrum harcis velitatio omnimodit pelent quistiur?



Itat atusam volecum
rendam fugia id eum-
quae perferferi
corerum voluptaquis
si berite namet ese-
quidebis doluptatur
audae venis as modi-
as earum sed quisqui
re, ut am, tet re sum
quam voluptatest,
culles re non!

Agniet que nosa venihit, eum hicipsa atiozem. It fugia aut laborum int, con pro volorrum site pra nis consed es volum aliquam sit eum.

www.inngeo.hu/gdsh



"Dolupti berit, omnibus animporro ium exerumque"

**Equae
lat et
voluptis
ipsum
estrum**

Nam rem ut quae. Nempor as que id enissin velicimposUs este dus aut inctio ipsanist asincil ignationet expenatur mod quunt. Periam repe voluptat et omnibusamet ex-ces ea alique nullaut officitem eum ut alique poratur? Et utas consequi dolorem quia ped quidit acitibea excepudaes re nonestrum ev-



Ga. Nam nisciminus

Ma voluptu remporibus acim es dunt utem-
perericid qui optatur?

Tionecerum quo blaciatem autet hit venient, volor rerum iustrum ut eumendae dus atemper cilibea cum reritio. Ut apis ant vellaut quos es di blab ius a vel ipsam, cum aut.



GDHSH

Identity Basics Logo Designs



THANK YOU

