

# SLOVGEOTERM a.s.



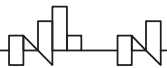
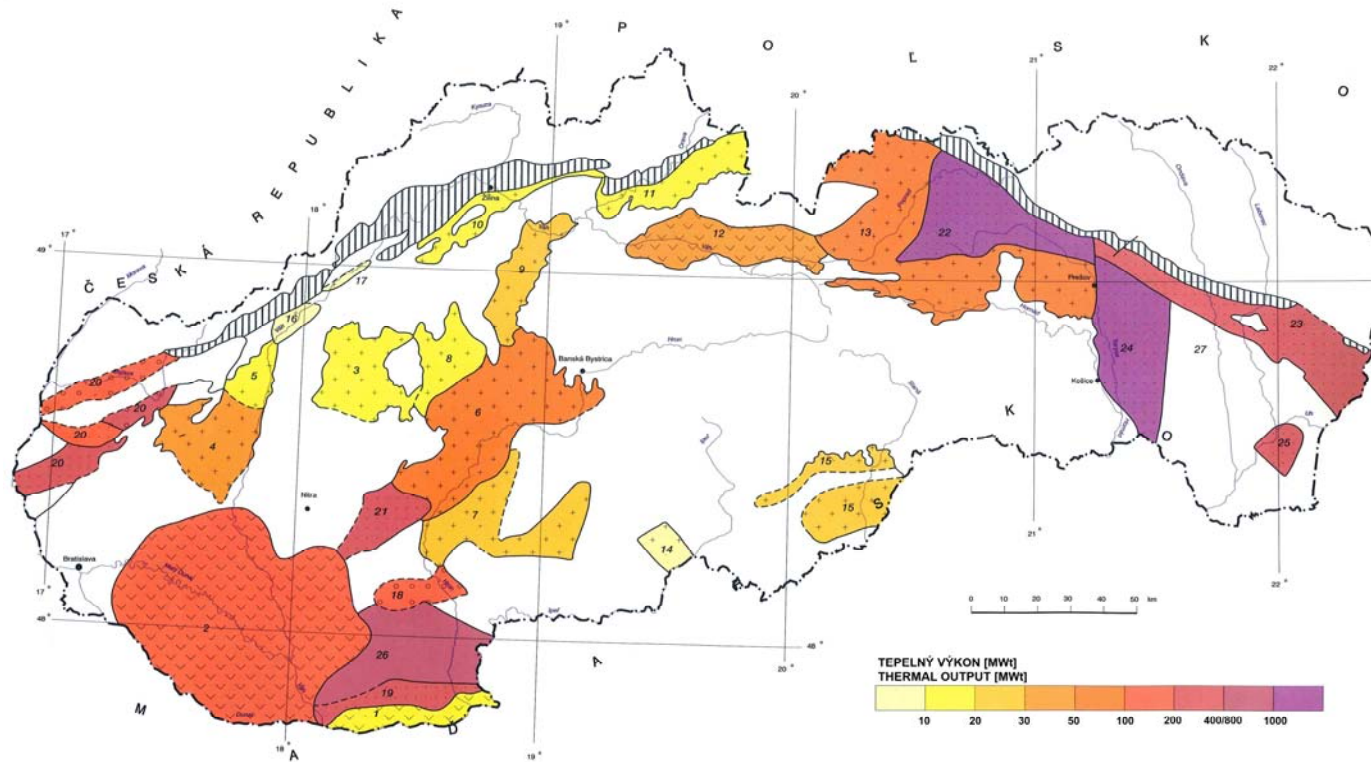
Oto Halás  
Managing director

SLOVGEOTERM a.s.

18.01.2022

# SLOVAK REPUBLIC

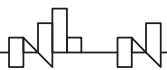
Is categorized as better-than-average region regarding geothermal energy resources



# SLOVGEOTERM a.s.

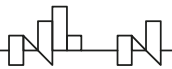
- Joint stock company
- Found in 1992
- Consulting and engineering company
- Preparing, developing and implementing projects focused on utilization of geothermal energy
- Main scope - geothermal district heating systems
- Geothermal power plants, spas, aquaparks, greenhouse heating

**ALMOST 30 YEARS EXPERIENCE OF  
GEOHERMAL ENERGY UTILIZATION IN SLOVAKIA**



# Complex Solutions for Geothermal Energy Utilization

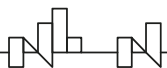
- Advising and consulting services
- Elaboration of geological documentation
- Elaboration of feasibility studies
- Elaboration of design layouts (project documentation)
- Administrative and legal works (permissions)
- Environmental impact assessment
- Drilling works and hydrodynamic tests contracting and supervising
- Chemical treatment of geothermal waters
- Complete implementation of geothermal projects (EPC contract)





# Our Projects

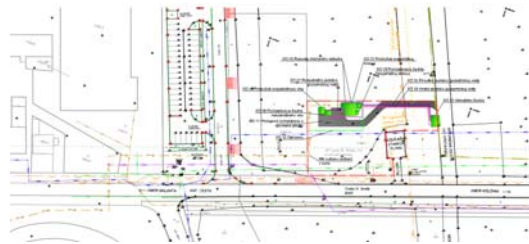
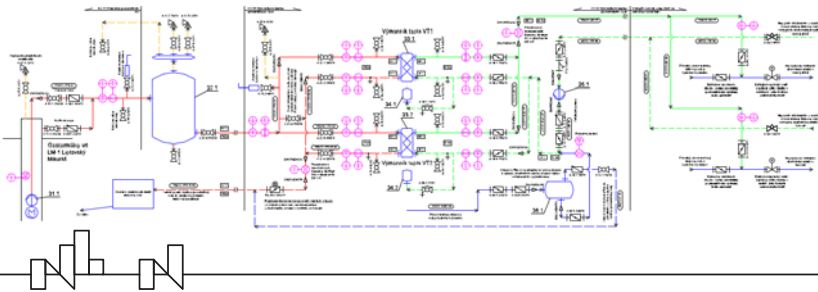
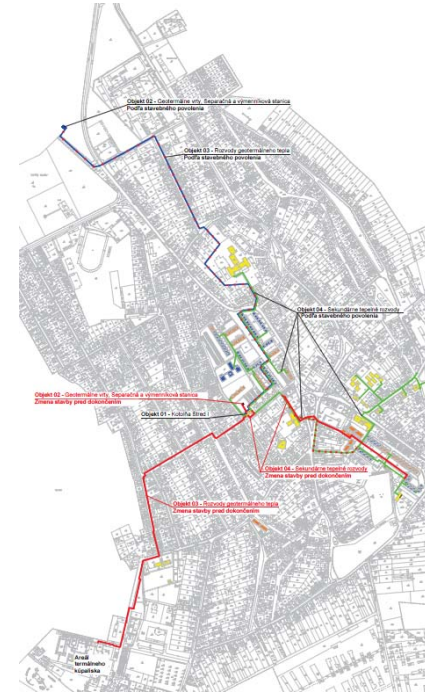
- Podhajska  
Greenhouse heating, swimming pools, reinjection of thermaly used geothermal water
- Galanta  
The first geothermal district heating system in Slovakia, aquapark
- Sala  
Geothermal district heating system, direct use and heat pumps
- Sered  
Geothermal district heating system, direct use, heat pumps and CHP unit
- Velky Meder  
Geothermal district heating system and swimming pools
- Kosice  
Large scale geothermal district heating system and power plant (under preparation)
- And others



# Role in the Project

## Beneficiary partner (project partner no. 2)

- develop, maintain and host the project website
- participate in the development of the matrix of geothermal systems and their customer networks in Slovakia with the description of experiences in the operation of geothermal system in Galanta
- contribute to determining the variables on which the efficiency of using geothermal energy depends
- take part in the elaboration of the data to be included in the database and assisting the mathematical model preparation
- conducting technical study visits in Slovakia
- complete the case study on the Galanta site
- participate in the formulation and publication of the project results
- SLOVGEOTERM was the leader of the Set-up of the model database work package (WP 4)





Iceland  
Liechtenstein  
Norway grants

Norway  
grants

# Thank you!

SLOVGEOTERM a.s.

Palisády 39, 811 06 Bratislava

Slovakia

Tel/Fax: +421 2 5441 7741

[slovgeoterm@slovgeoterm.sk](mailto:slovgeoterm@slovgeoterm.sk)

[www.slovgeoterm.sk](http://www.slovgeoterm.sk)

